

Box-System-Hover/-XL 160/180/200 x 200



D Montageanleitung

GB Assembly instructions

NL Handleiding voor de montage

PL Instrukcja montażu

TR Montaj talimatı

RU Инструкция по монтажу

RO Instrucțiunile de instalare

I Istruzioni per l'installazione

F Instructions d'installation

SK Návod na inštaláciu

CZ Návod k instalaci

H Telepítési utasítások



Nicht Schieben



Service • Dienstverlening • Serwis • Servis • Сервисная служба

Name • Naam • Nazwa • İsim • Имя

Boxsystem Hover







Nr. • No. • Номер


Typ • Type • Тип • Тип

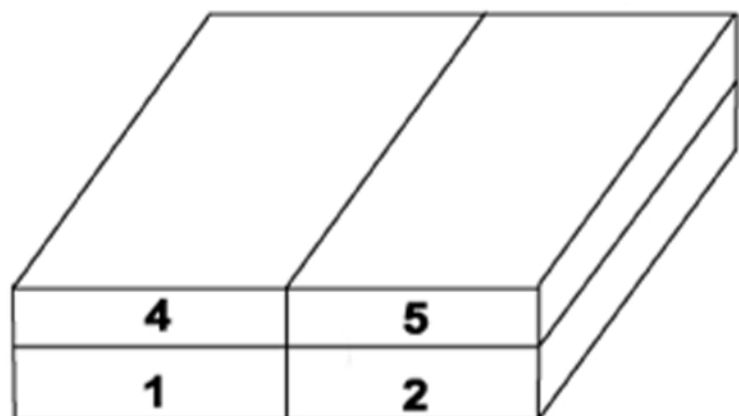
Boxspring 160/180/200x200



Beschlagcolli

A	2x	B	4x	C	2x
					
U- Winkel/ Klemme		Holzfuß schwarz		Dreieckfuß schwarz	
D	2x	E	2x	G	8x
					
Holzschraube 4x70		U-Scheibe		Filzgleiter schwarz	

F	4x
	
<i>nur für XL-Version</i>	



0
10
20
30
40
50
60
70
80
90
100
110
120
130
140
150
160
170
180
190
200

1.

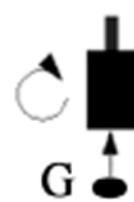
nur XL



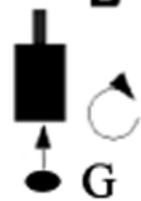
nur XL



B



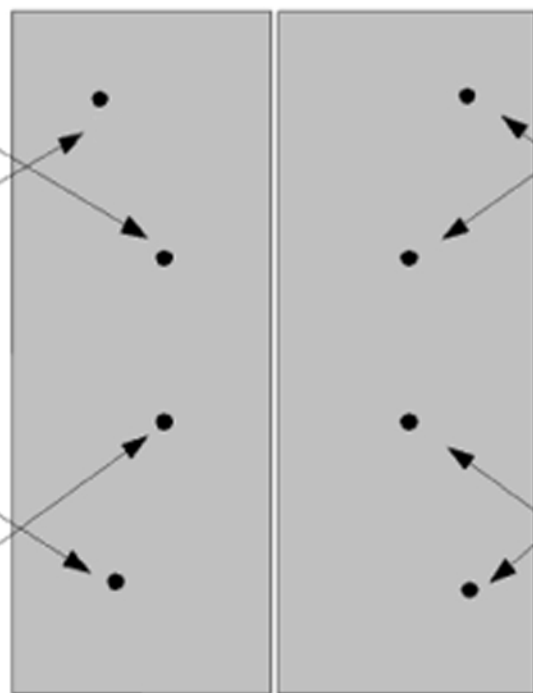
B



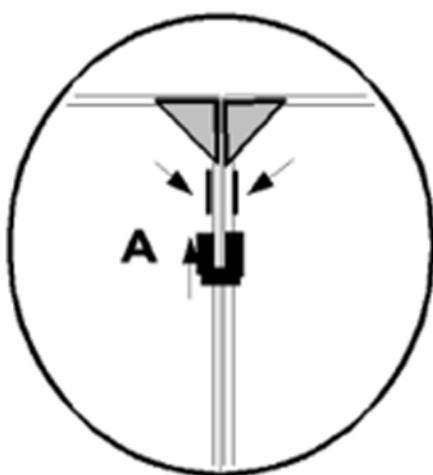
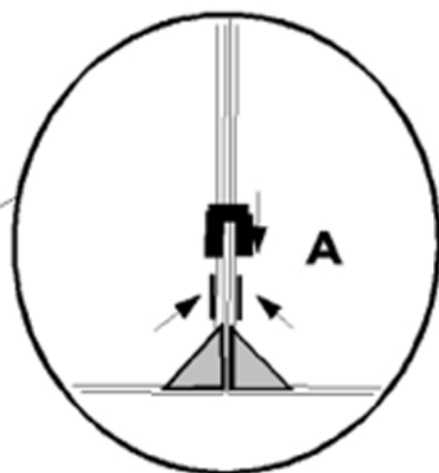
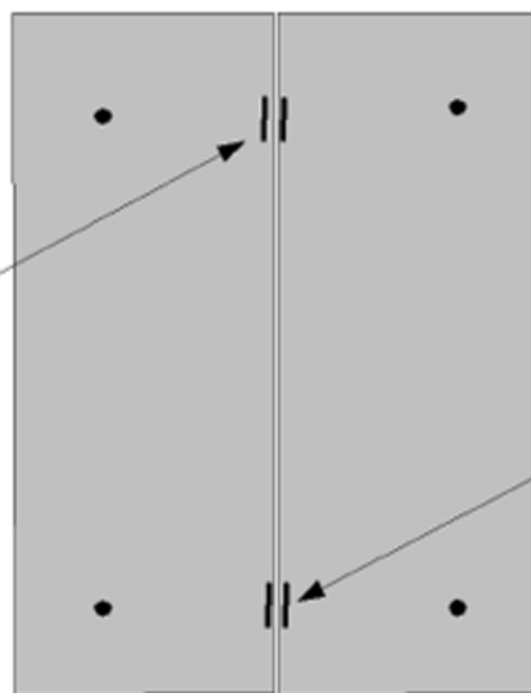
nur XL



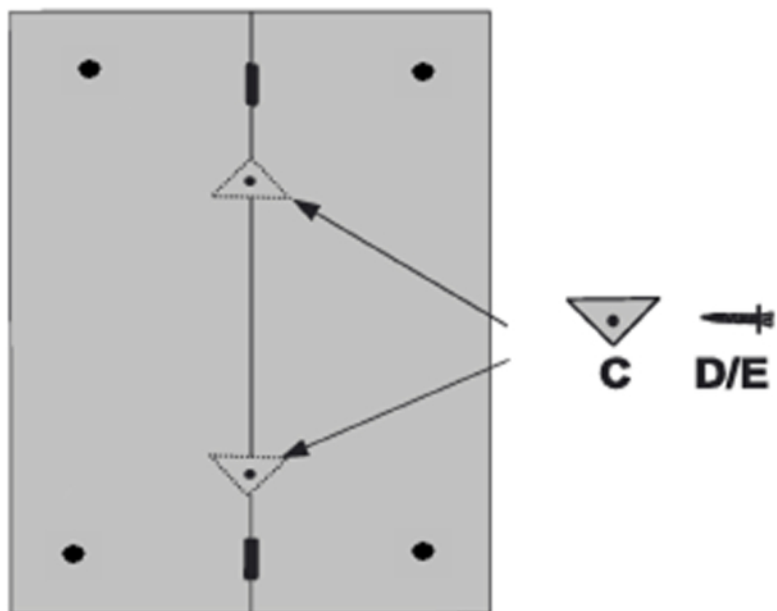
nur XL



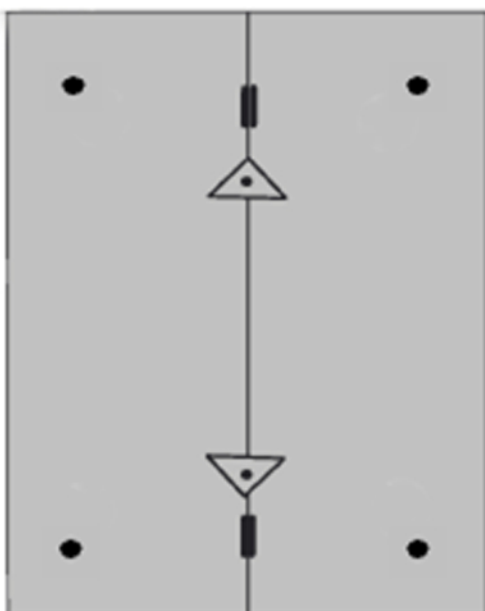
2.



3.



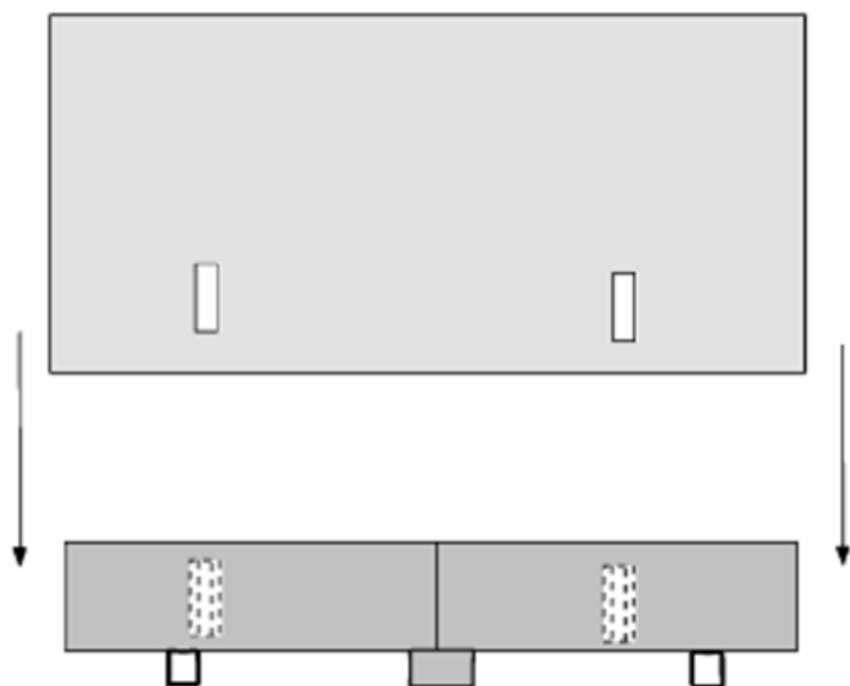
4.



5. Montage der LED-Beleuchtung

gesonderte Anleitung

6. Kopfteilmontage



Kopfteil in die entsprechenden Halterungen an den Bettkästen einhängen und anschließend die Matratzen auflegen.



**Bitte dieses Bett beim Umstellen immer anheben und nicht auf dem Fußboden verschieben!!!!
Es besteht die Gefahr von Schäden durch Verschieben.**